

Domains & Kingdoms NOTES

I. Domain Bacteria (Monera)

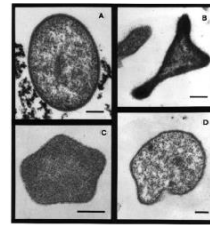
- ★ Prokaryotes- **NO** nucleus
- ★ **Uni**cellular
- ★ Autotrophs & heterotrophs
- ★ DNA free-floating in **cytoplasm**
- ★ **Earliest** life form



- ★ Examples: **bacteria, cyanobacteria (blue-green algae)**

II. Domain Archaea

- ★ **Prokaryotes**- NO nucleus
- ★ **Uni**cellular
- ★ **Autotrophs & heterotrophs**
- ★ DNA free-floating in cytoplasm
- ★ Live in **most** extreme environments (hot springs & salt lakes)
- ★ Greek word for “ancient”



- ★ Example: **Haloarchaea**

III. Domain Eukarya

- ★ Eukaryotes- have **an organized** nucleus
- ★ **Uni**cellular & **multi**cellular
- ★ Autotrophs & heterotrophs

- ★ Further classified into **FOUR** kingdoms: (OVER→)

A. Kingdom Protista

- ★ Eukaryotes- Have nuclei
- ★ **Uni**cellular
- ★ Autotrophs & heterotrophs
- ★ Examples: amoeba, paramecium, Euglena



B. Kingdom Fungi

- ★ Eukaryotes- Have nucleus
- ★ **Multi**cellular; except **yeast**
- ★ **Heterotrophs**
- ★ Cell wall made of **chitin** (kite- in)
- ★ Examples: mushrooms, yeast, mold, mildew



C. Kingdom Plantae

- ★ Eukaryotes- Have **nucleus** & **organs**
- ★ **Multi**cellular
- ★ **Autotrophs**
- ★ Cell wall made of **cellulose**
- ★ Examples: moss, corn, flowering plants, conifers



D. Kingdom Animalia

- ★ Eukaryotes- Have nucleus & organ **systems**
- ★ **Multi**cellular
- ★ Heterotrophs
- ★ Have cell **membrane**; **no** cell wall
- ★ Examples: humans, hydra, earthworms, clams



Domains & Kingdoms NOTES

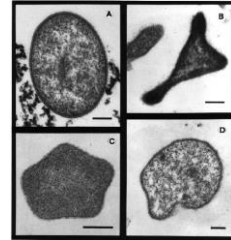
I. Domain Bacteria

- ★ Prokaryotes- _____ nucleus
- ★ _____ cellular
- ★ Autotrophs & Heterotrophs
- ★ DNA free-floating in _____
- ★ _____ life form
- ★ Examples: _____



II. Domain Archaea

- ★ _____ - NO nucleus
- ★ _____ cellular
- ★ _____ & _____
- ★ DNA free-floating in cytoplasm
- ★ Live in _____ extreme environments (hot springs & salt lakes)
- ★ Greek word for ancient
- ★ Example: _____



III. Domain Eukarya

- ★ Eukaryotes- have _____ nucleus
- ★ _____ cellular & _____ cellular
- ★ Autotrophs & Heterotrophs
- ★ Further classified into **FOUR Kingdoms:** (OVER→)

A. Kingdom Protista

- ★ Eukaryotes- Have nuclei
- ★ _____cellular
- ★ Autotrophs & heterotrophs
- ★ Examples: _____



B. Kingdom Fungi

- ★ Eukaryotes- Have nuclei
- ★ _____ cellular ; except _____
- ★ _____
- ★ Cell wall made of _____ (kite- in)
- ★ Examples: _____



C. Kingdom Plantae

- ★ Eukaryotes- Have _____ & _____
- ★ _____cellular
- ★ _____
- ★ Cell wall made of _____
- ★ Examples: _____



D. Kingdom Animalia

- ★ Eukaryotes- Have nucleus & organ _____
- ★ _____cellular
- ★ Heterotrophs
- ★ Has cell _____ ; _____ cell wall
- ★ Examples: _____

